

# A Series Subracks



## Type A-I Subrack

- The subrack is used as a desktop case
- The subrack is equipped with VC legs to prevent the chassis from sliding after stacking
- Composite standard plug-in box can be installed inside the chassis
- When supplying: the box has been partially assembled
- Standard: 60297-3
- When the non ventilated form is selected, the protection grade is IP42

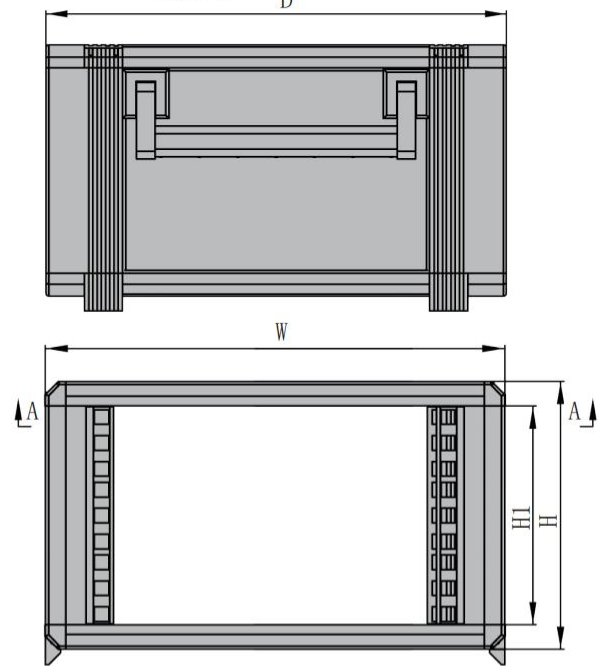
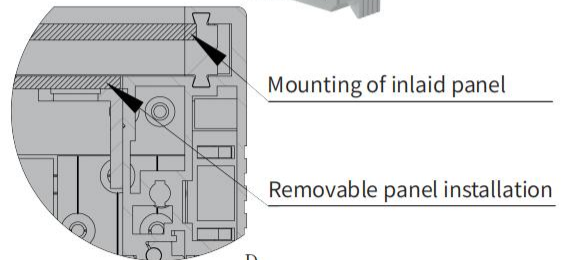


### Material and finish

- Cover plate: 5052 aluminum plate, chromate passivation/painting
- Side plate: 6063 aluminum profile, painted
- Beam: 6063 aluminum profile, painted
- Installation angle rail: 6063 aluminum profile, chromate passivation/painting (Color can be customized)

### Accessories (Optional models)

Item	Name	Qty
1	Cover plate	2
2	Vertical bar	4
3	Cross member	4
4	Side member	4
5	Liner plate	2
6	Installation of corner rails	2
7	Leg	8
8	Connecting bar	4
9	Corner connector	8
10	Mounting strip	4



### Order information

Height H	Width W	Height H(mm)	Height H1(mm)	Width W(mm)	Model	Depth D 300mm	Depth D 400mm	Depth D 500mm	Model	Depth D 300mm	Depth D 400mm	Depth D 500mm
2U	42TE	120	90	321	Perforated	01230042	01240042	01250042	Without holes	02230042	02240042	02250042
2U	84TE	120	90	534	Perforated	01230084	01240084	01250084	Without holes	02230084	02240084	02250084
3U	42TE	164	134	321	Perforated	01330042	01340042	01350042	Without holes	02330042	02340042	02350042
3U	84TE	164	134	534	Perforated	01330084	01340084	01350084	Without holes	02330084	02340084	02350084
4U	42TE	209	179	321	Perforated	01430042	01440042	01450042	Without holes	02430042	02440042	02450042
4U	84TE	209	179	534	Perforated	01430084	01440084	01450084	Without holes	02430084	02440084	02450084
6U	42TE	297	267	321	Perforated	01630042	01640042	01650042	Without holes	02630042	02640042	02650042
6U	84TE	297	267	534	Perforated	01630084	01640084	01650084	Without holes	02630084	02640084	02650084

EK&EG PRO Series Subracks
EK&EG+PRO Series Subracks
BEK&BEG PRO Series Subracks
Handle specification and accessories
Guide-rail specification and accessories
19" CUR Series Subracks
SNCF Series Subracks
Shielded plug-in units Series Subracks
VERO Series Subracks
Protective Series Subracks
CASE Series Subracks
Type A Series Subracks
Rugged Subracks Side panel
IN-S Series Subracks
Subracks Accessories
Panel component
Order no. and page Table

# A Series Subracks



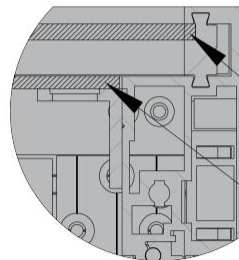
## Type A-II Subrack

- The subrack is used as a desktop case
- The subrack is equipped with VC legs to prevent the chassis from sliding after stacking
- Composite standard plug-in box can be installed inside the chassis
- When supplying: the box has been partially assembled
- Integral 5052 aluminum plate is selected as the side plate
- Standard: 60297-3
- When the non ventilated form is selected, the protection grade is IP42



### Material and finish

- Cover plate: 5052 aluminum plate, chromate passivation/painting
- Side plate: 6063 aluminum profile, painted
- Beam: 6063 aluminum profile, painted
- Installation angle rail: 6063 aluminum profile, chromate passivation/painting (Color can be customized)

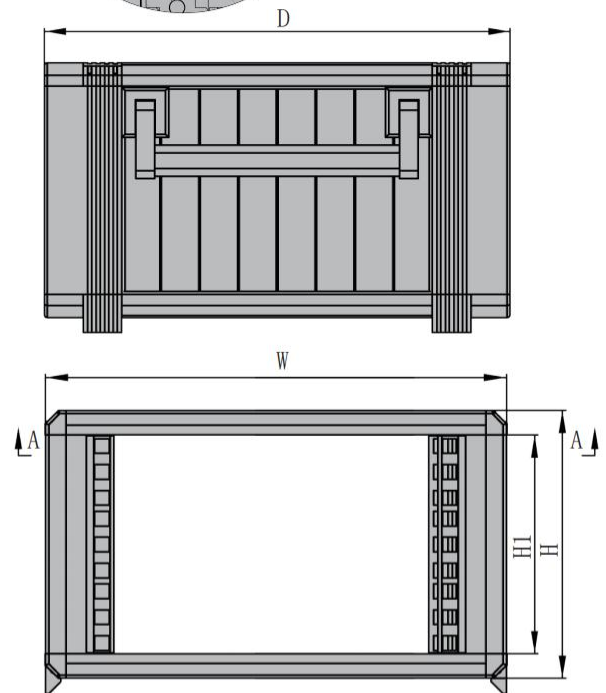


Mounting of inlaid panel

Removable panel installation

### Accessories (Optional models)

Item	Name	Qty
1	Cover plate	2
2	Vertical bar	4
3	Cross member	4
4	Side member	4
5	Liner plate	2
6	Installation of corner rails	2
7	Leg	8
8	Connecting bar	4
9	Corner connector	8
10	Mounting strip	4
11	Side panel	8/12/16
12	Horizontal Carrying Handle	2



### Order information

Height H	Width W	Height H(mm)	Height H1(mm)	Width W(mm)	Model	Depth D	Depth D	Depth D	Model	Depth D	Depth D	Depth D
						300mm	400mm	500mm		300mm	400mm	500mm
2U	42TE	120	90	321	Perforated	03230042	03240042	03250042	Without holes	04230042	04240042	04250042
2U	84TE	120	90	534	Perforated	03230084	03240084	03250084	Without holes	04230084	04240084	04250084
3U	42TE	164	134	321	Perforated	03330042	03340042	03350042	Without holes	04330042	04340042	04350042
3U	84TE	164	134	534	Perforated	03330084	03340084	03350084	Without holes	04330084	04340084	04350084
4U	42TE	209	179	321	Perforated	03430042	03440042	03450042	Without holes	04430042	04440042	04450042
4U	84TE	209	179	534	Perforated	03430084	03440084	03450084	Without holes	04430084	04440084	04450084
6U	42TE	297	267	321	Perforated	03630042	03640042	03650042	Without holes	04630042	04640042	04650042
6U	84TE	297	267	534	Perforated	03630084	03640084	03650084	Without holes	04630084	04640084	04650084

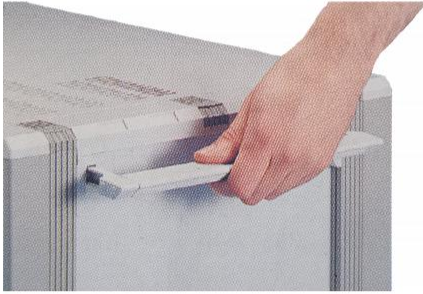


# A Series Subracks

## Type A Subrack accessories

### Horizontal Carrying Handle

- For easy and safe transportation
- Supplementary installation available
- Load resistance 30KG/pzzz
- Includes mounting fixings



### Material and finish

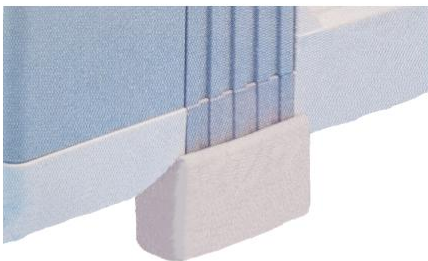
- Side section: zinc die-cast, painted, color similar to RAL7035
- Middle part: Extruded aluminum profile, painted, color similar to RAL7035

### Order information

Depthmm	Qty/UP	Order no
300	2	00100100
400	2	00100101
500	2	00100102

### Rubber foot cover

- Can be supplemented by mounting on Type A subrack feet to avoid sliding of the case on a smooth plane



### Material and finish

- Soft PVC, Shore hardness 60°.
- Color RAL7035

### Order information

Qty/UP	Order no
12	00100103

### Installation of corner rails

- Depth adjustable with 12.5 pitch for mounting rack mount devices or panels in Type A Subrack
- Mounting plates with threaded holes allow for different depths of mounting of component boxes/rack-mounted devices
- Includes mounting brackets



### Material and finish

- Aluminum, anodized treatment

### Order information

Height	Qty/UP	Order no
1U	4	00100104
2U	4	00100105
3U	4	00100106
4U	4	00100107
5U	4	00100108
6U	4	00100109

EK&EG-PRO Series Subracks

EK+EG+PRO Series Subracks

BEK&BEG-PRO Series Subracks

Handle specification and accessories

Guide rail specification and accessories

19" CUR Series Subracks

SNCF Series Subracks

Shielded plug-in units Series Subracks

VERO Series Subracks

Protective Series Subracks

CASE Series Subracks

Type A Series Subracks

Rugged Subracks Side panel

IN-S Series Subracks

Subracks Accessories

Panel component

Order no. and page Table

# A Series Subracks

## Type A Subrack accessories

### M4 Threaded insert

- Used for mounting corner rails, sliding rails, mounting assemblies, etc. Can be pushed into the racking slot of the side panel
- Includes mounting fixings



#### Material and finish

- Extruded aluminum profile, chromate passivation

#### Order information

Height	Qty/UP	Order no
1U	8	00100110
2U	8	00100111
3U	8	00100112
4U	8	00100113
5U	8	00100114
6U	8	00100115

### Grounding Connection Kit

- For meeting the requirements of electrical safety measures, suitable for all Type A subracks
- Configuration list: threaded strip, screw, connection lead in green/yellow, toothed ring, screw nut



#### Order information

Qty/UP	Order no
4	00100116

### Ventilation front panel

- Used for ventilation of cabinets and subracks



#### Material and finish

- Aluminum, anodized treatment

#### Order information

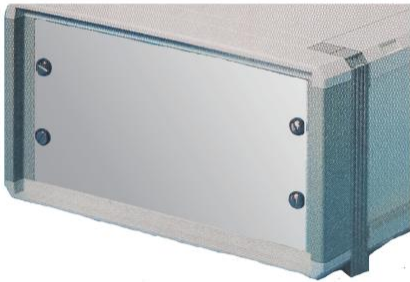
Width	Qty/UP	Qty/UP	Order no
482.6mm(19")	1U	3	00100117
482.6mm(19")	2U	3	00100118
482.6mm(19")	3U	3	00100119

# A Series Subracks

## Type A Subrack accessories

### Cover plate, 482.6mm (19")

- For installation in electronic cabinets or subracks



#### Material and finish

- Aluminum, anodized treatment

#### Order information

Height	Qty/UP	Order no (269.2mm)	Order no (482.6mm)
1U	3	00100120	00100126
2U	3	00100121	00100127
3U	3	00100122	00100128
4U	3	00100123	00100129
5U	3	00100124	00100130
6U	3	00100125	00100131

### Hinged cover plate, horizontally hinged

- For installation in electronic cabinets or subracks
- Includes mounting fixings



#### Material and finish

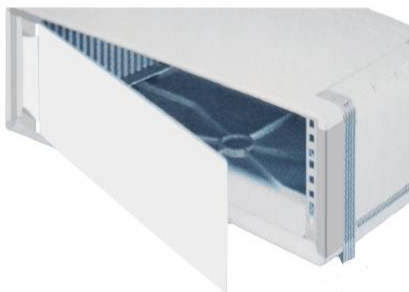
- Aluminum 3mm, anodized treatment

#### Order information

Height	Qty/UP	Width	Order no
3U	2	482.6mm(19")	00100132
6U	2	482.6mm(19")	00100133

### Hinged cover plate, rotatable

- For installation in electronic cabinets or subracks
- Includes mounting fixings



#### Material and finish

- Aluminum 3mm, anodized treatment

#### Order information

Height	Qty/UP	Width	Order no
3U	2	482.6mm(19")	00100134
6U	2	482.6mm(19")	00100135

EK&EG PRO  
Series Subracks

EK+&EG+ PRO  
Series Subracks

BEK&BEG PRO  
Series Subracks

Handle  
specification  
and accessories

Guide-rail  
specification  
and accessories

19"CUR  
Series Subracks

SNCF  
Series Subracks

Shielded  
plug-in units  
Series Subracks

VERO  
Series Subracks

Protective  
Series Subracks

CASE  
Series Subracks

Type A  
Series Subracks

Rugged  
Subracks  
Side panel

IN-S  
Series Subracks

Subracks  
Accessories

Panel  
component

Order no.  
and page Table

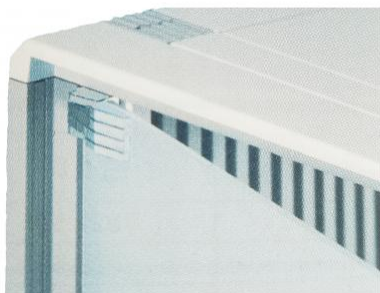


# A Series Subracks

## Type A Subrack accessories

### Hinged

- For cover plates
- Includes mounting fixings



#### Material and finish

- Zinc die castings, nickel plated

#### Order information

Qty/UP	Order no
2	00100136

### Drawer for 482.6 mm (19") with base plate

- For keyboards, operation manuals, etc. The bottom aperture plate facilitates IN-S circulation in the control cabinet and has a load capacity of 50KG. The 1U drawer can be installed by rotating 180° on the longitudinal axis so that it can be used as a bracket type countertop
- Includes sliding telescopic rails, drawer mounting kit



#### Material and finish

- Drawer material is aluminum, anodized  
Sliding telescopic rail: steel plate, galvanized

#### Order information

Height	Model	Order no
1U	with base plate	00100137
1U	Without base plate	00100138
3U	with base plate	00100139
3U	Without base plate	00100140

### Set screw M6

- Set screws for electronic rack mount, 482.6mm (19") mounting device and shield
- Includes plastic spacer



### Insert screw nut

- Fixing screws for electronic rack mounting, 482.6mm (19") mounting devices and shields can be fixed to the fixing profile 482.6mm (19") with insertion screw nuts
- For profile plate thicknesses in the range of 0.8-2.0mm. In the small error range, insertion screw nuts with a profile plate thickness of 1.2-1.5 mm should be selected for mounting devices with or without contact points with the 482.6mm (19") profile/case

#### Order information

Model	Panel Thick	Qty/UP	Order no
With contact	0.8-2.0mm	50个	00100142
Without contact	0.8-2.0mm	50个	00100143
With contact	1.2-1.5mm	50个	00100144
Without contact	1.2-1.5mm	50个	00100145

#### Order information

Name	Qty/UP	Order no
Pan head Pozidrive c/sk screwM6	100	00100141